

MTHA-YAS-PAI LAM

VÉGTELEN ÚT / INFINITE ROAD

HOMMAGE A KÖRÖSI CSOMA SÁNDOR

Molto eguale (♩ = 88-92)

SÁRI JÓZSEF

Musical score for Flute 5, titled "MTHA-YAS-PAI LAM" and "VÉGTELEN ÚT / INFINITE ROAD". The score is in 5/4 time and consists of 61 measures. It features various dynamics including *p*, *sf*, *p*, *sf*, *p*, *sf*, *p*, *simile*, *cresc.*, *ff*, *f*, and *p*. The score includes several slurs and fingerings, and is marked "Molto eguale" with a tempo of 88-92 bpm.

66 *f* *p* *p* *f*

71 *p* *f* *p*

76 *f* *p* *f* *p* 2

82 *f* 2 *f* *p* *f*

88 *p* 2 *f* *p*

94 *sf* *p* *sf*

99 *p* *sf* *p* 2

105 *sf* *p* *f* *sempre f*

110

115

120

125

130

135

140

145

150

155

160

165

170

175

180

185

decresc.

(p) *sub. f*

sub. p

f *decresc.* *sub. f* *decresc.*

sub. f *decresc.* *sub. f*

decresc. *sub. f* *decresc.*

p

sf *p* *sf*

190

p sf p

195

sf p sf 2

201

p sf p sf p sf p sf p

206

sf p sf p sf p sf p

211

sf p sf p sf p

216

sf p f p f p f p f

221

p f p f p f p

226

f p f

231

p

236

f p f

241

p

245

f *p* *f* *p*

249

f *p* *f*

253

p *f* *p* *f*

257

p *f* *p* *f*

261

p *f* *p* *f*

265

p *f*

269

p *f* *p*

273

f *p* *f*

277

p *f*

281

V.S.

285

289

293

297

301

306

311

316

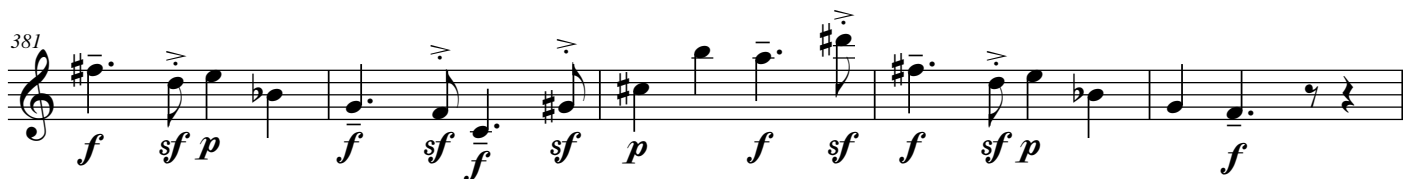
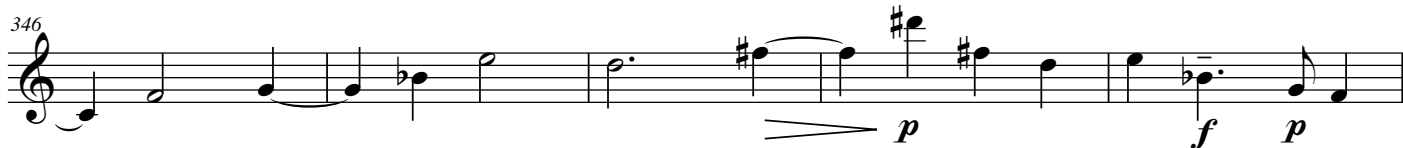
321

326

331

336

341



398



402



406



410



415



Detailed description: This image contains five staves of musical notation in treble clef, representing measures 398 through 418 of a piece. The notation is written in a single system. The first staff (measures 398-401) begins with a treble clef and a key signature of one sharp (F#). It features a series of eighth and sixteenth notes, many beamed together, with some notes marked with a sharp sign. The second staff (measures 402-405) continues the melodic line, showing a mix of eighth and sixteenth notes, with some notes marked with a sharp sign. The third staff (measures 406-409) shows a continuation of the melodic line, with some notes marked with a sharp sign. The fourth staff (measures 410-414) shows a continuation of the melodic line, with some notes marked with a sharp sign. The fifth staff (measures 415-418) shows a continuation of the melodic line, with some notes marked with a sharp sign. The notation is written in a single system, with measures 398-401 on the first staff, 402-405 on the second, 406-409 on the third, 410-414 on the fourth, and 415-418 on the fifth.